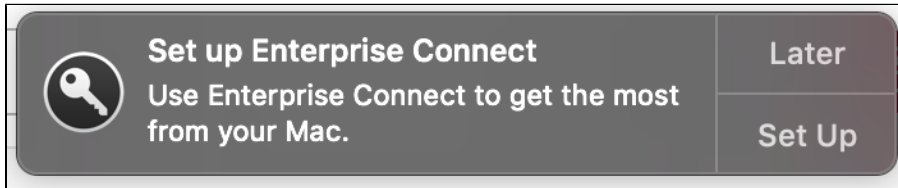


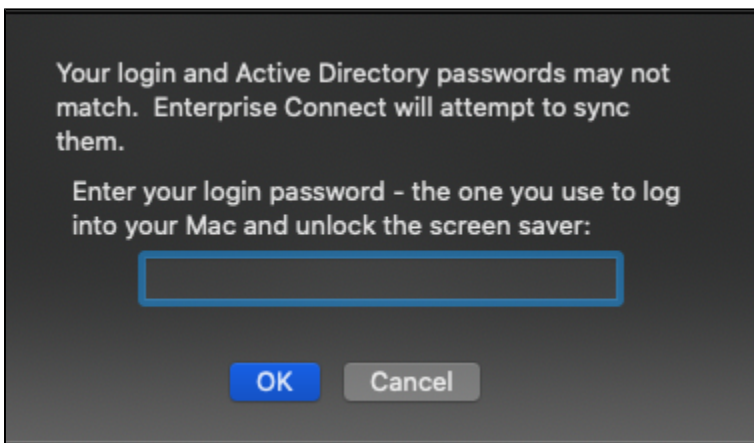
Use Apple Enterprise Connect

Enterprise Connect will display in the top menu bar on the Mac and you will be prompted to set it up the first time

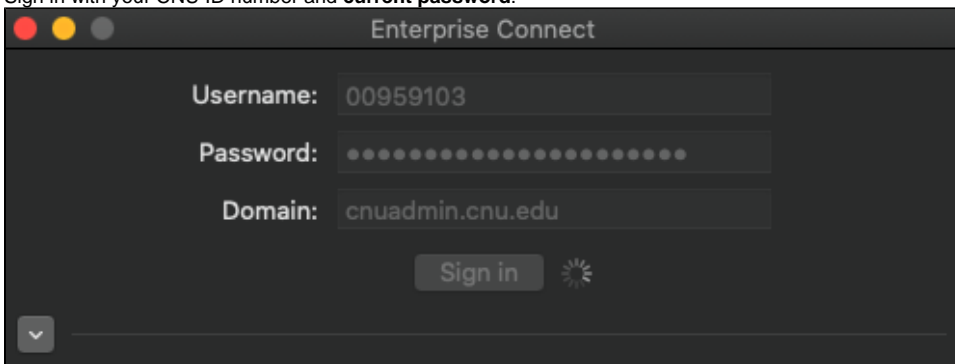


On-Campus

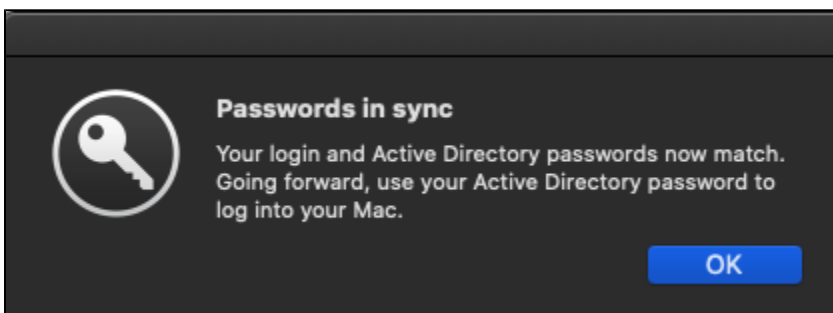
1. Click **Set Up** then enter your **login** password (the one you use to log in to/unlock your Mac, **not** necessarily your current CNU password) and click **OK**.



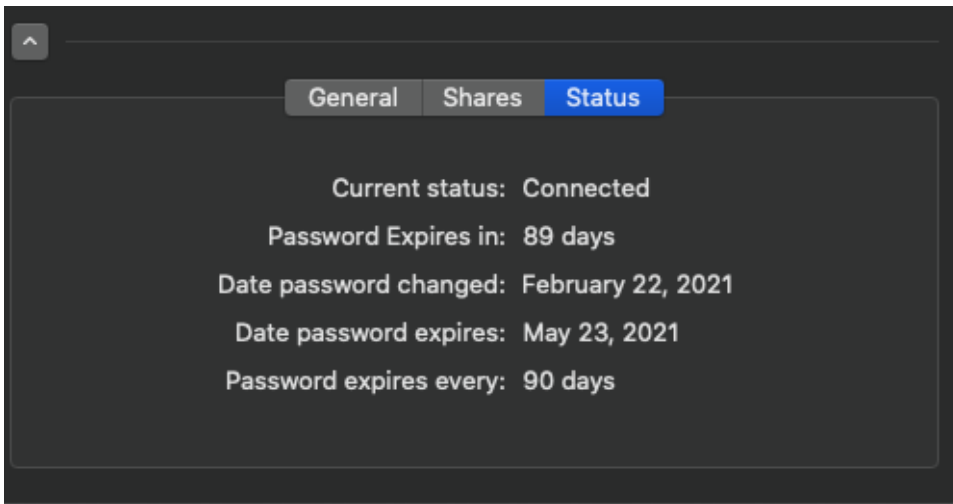
2. Sign in with your CNU ID number and **current password**.



3. Your passwords are synced! You will now be able to login to your Mac with your current CNU credentials.

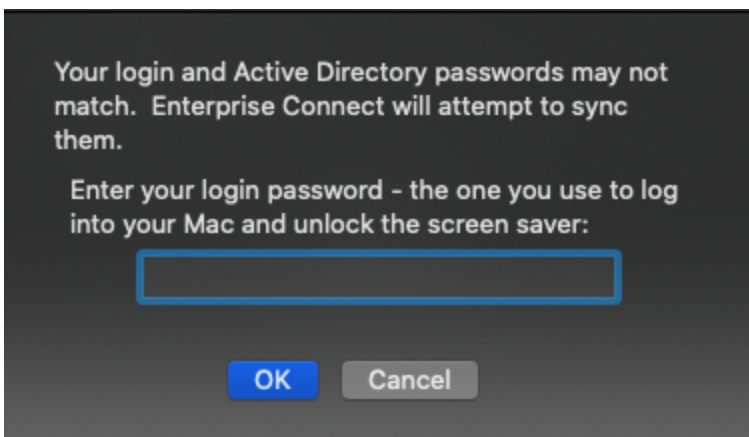
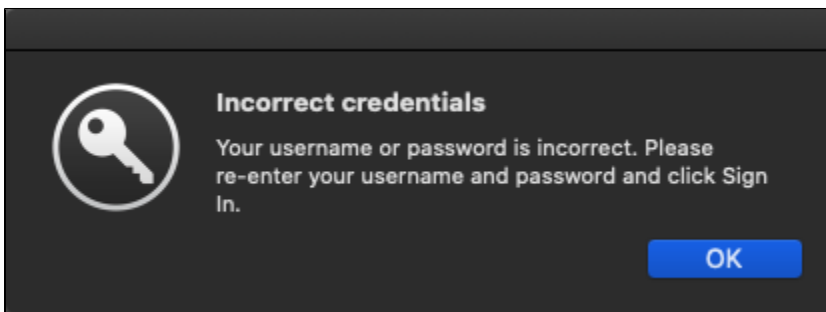


You can view your password expiration status at any time via Enterprise Connect by clicking the key icon in the top menu bar. Additional details are available within the application.

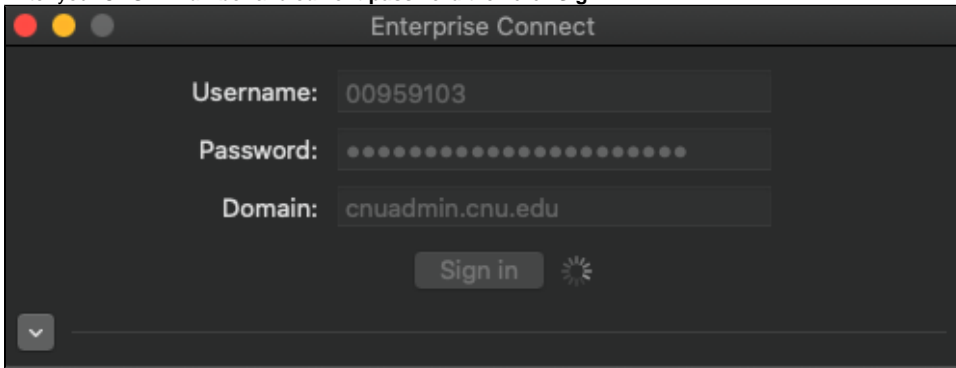


Off-Campus

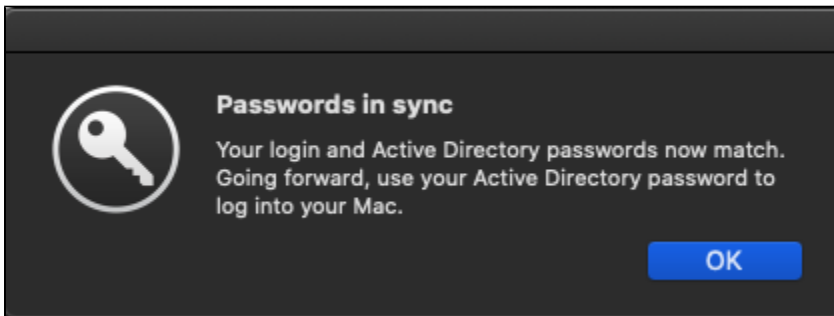
1. Connect to the GlobalProtect VPN.
2. You will get a notification that your credentials are incorrect.
3. Click **OK** then enter your **login** password (the one you use to login to/unlock your Mac, **not** your current CNU password) and click **OK**.



4. Enter your **CNU ID number** and **current password** then click **Sign In**.

A dark-themed macOS-style window titled "Enterprise Connect". It contains three input fields: "Username:" with the text "00959103", "Password:" with masked dots, and "Domain:" with the text "cnuadmin.cnu.edu". Below these fields is a "Sign in" button and a loading spinner. At the bottom left, there is a small dropdown arrow icon.

5. Your passwords are synced! You will now be able to login to your Mac with your current CNU credentials.



Related articles

Content by label

There is no content with the specified labels