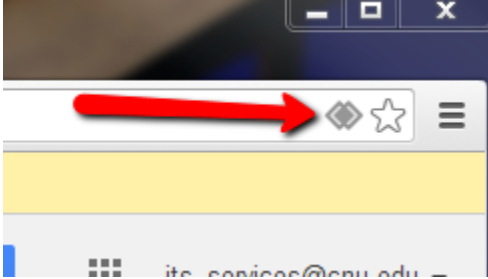


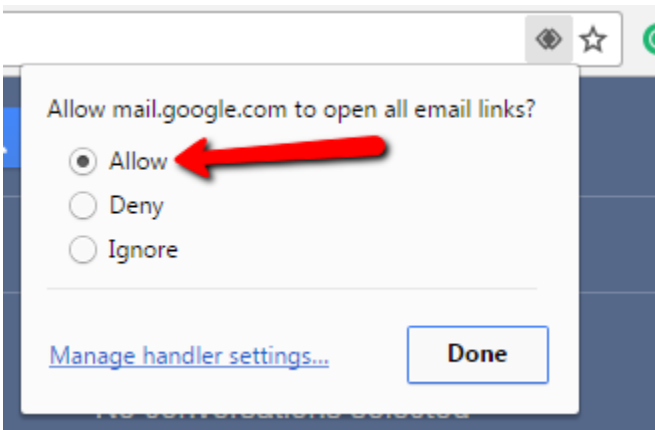
Use CNU email with webpage email links

If you are using Chrome to access your CNU mail, you can set up your browser so that e-mail links automatically open in your CNU e-mail account. This works only in Chrome.

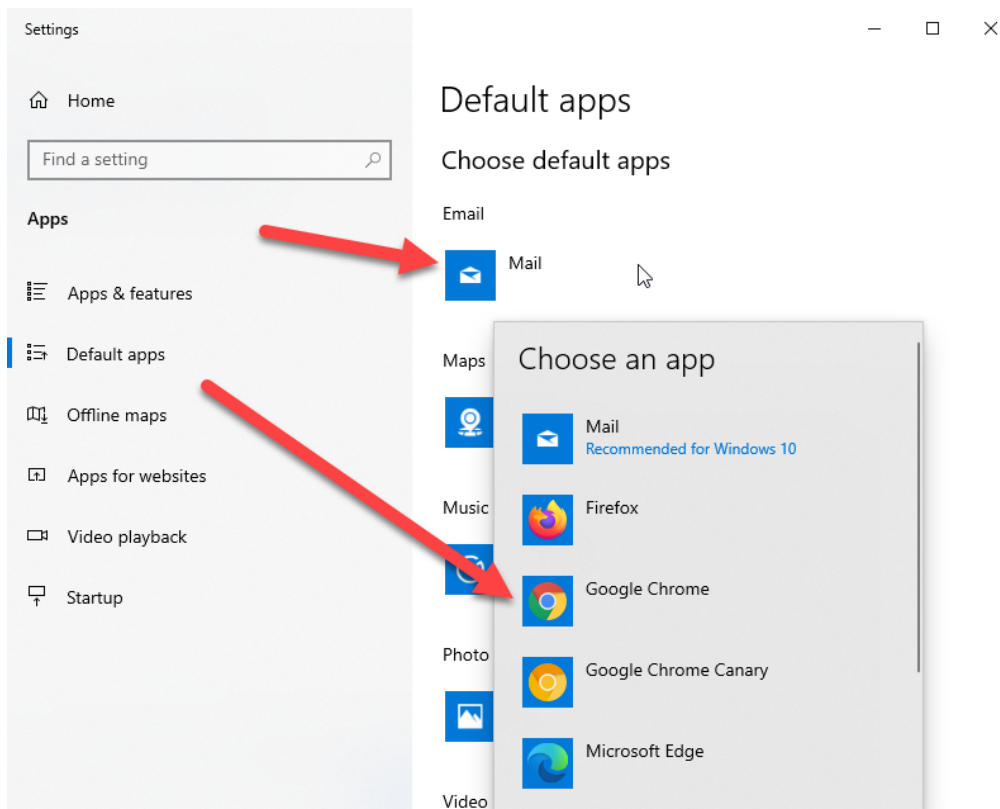
To do so, navigate to your CNU e-mail. You'll see the following symbol in the Address Bar:



Click on the symbol and the following menu will appear. Click Allow.



On Windows, you'll get the popup below. For the Mail section, choose Google Chrome.



Select "Allow" from the menu and click "Done". From now on, any e-mail link you click on within Chrome will open up in your CNU e-mail.